

KRC

KANSAS RURAL CENTER



Feeding Kansas: Civic Agriculture for Civic Health

Rural Grocery Summit

June 7, 2016

Kansas Rural Center

The Kansas Rural Center promotes the long-term health of the land and its people through research, education and advocacy that advance an **economically viable, ecologically sound, and socially just** food and farming system.

To feed the world, Kansans must start at home by feeding our neighbors.





Community Food Solutions Initiative

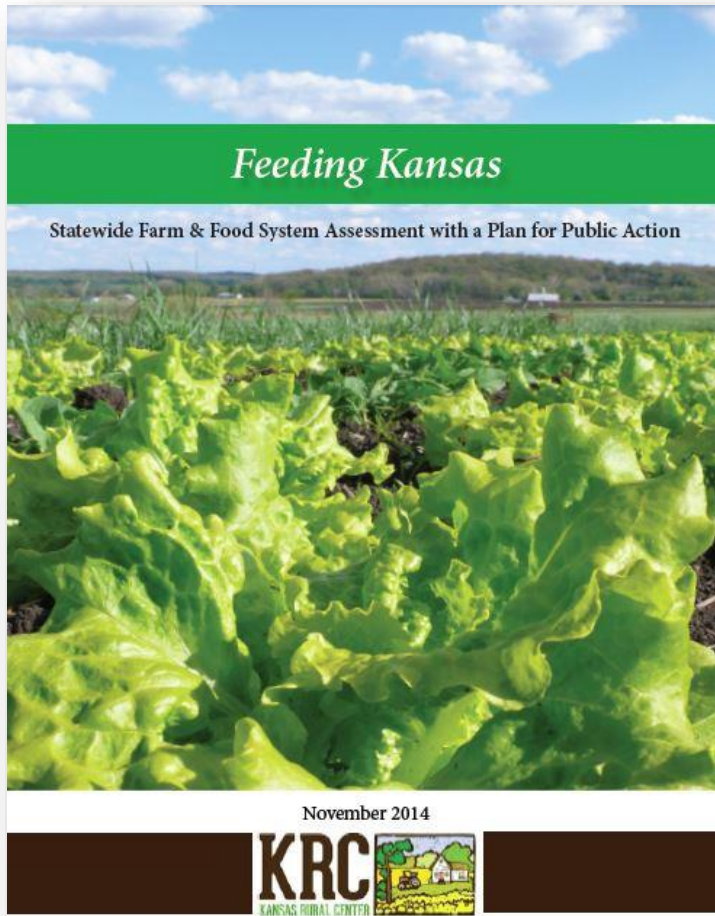
Initiative aims to advance key public policy solutions to better incorporate Kansas farms into the supply chain there by potentially improving Kansas's economy, community, environment, and health status.

Civic Agriculture for Civic Health

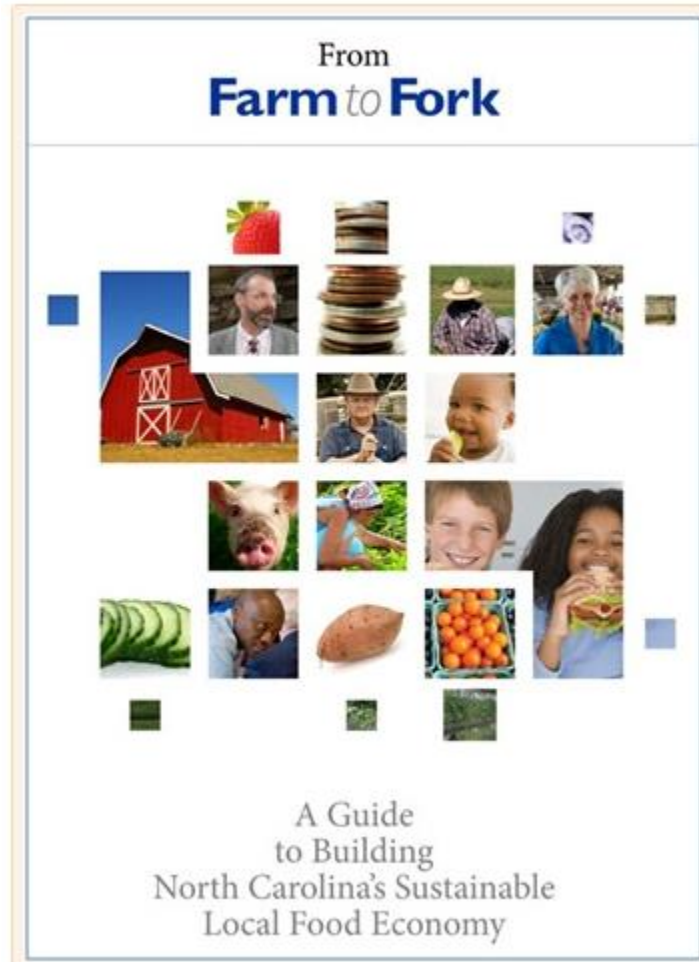
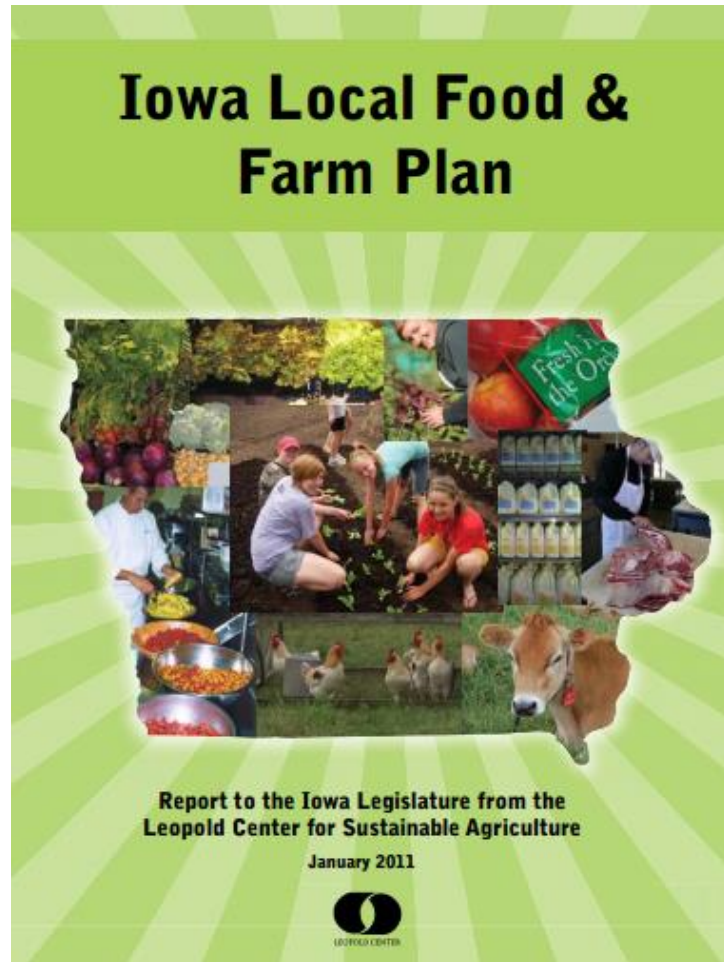


Community Food Solutions Timeline

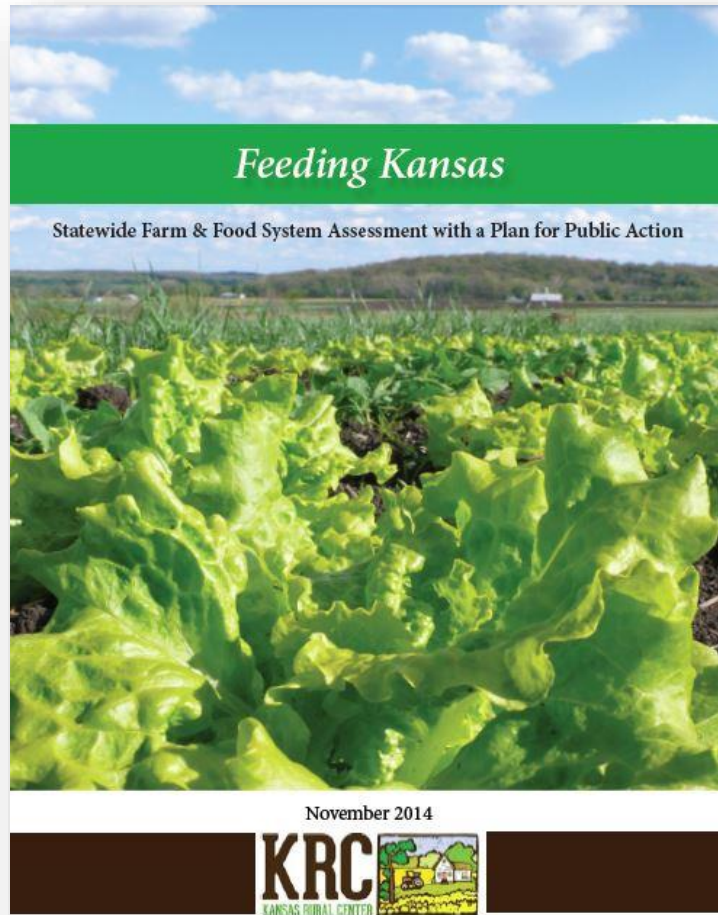
Year 1 – Engagement with partners



Local Food & Farm Report Models



Community Food Solutions Timeline



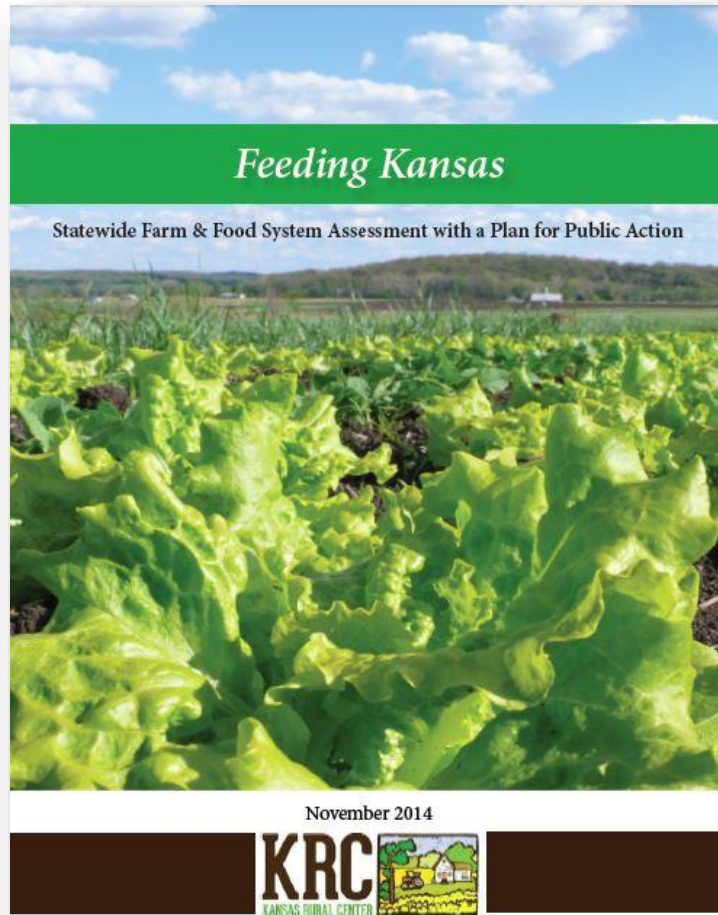
Year 1 – Engagement with partners

Year 2 – Feeding Kansas Report & Strategy

What We Found

1. Formation of state and local food and farm councils or task forces
2. Creation of a high level, independent, state farm & food systems organizer position
3. Implementation of key supports to increase production of fruits and vegetables in Kansas

Community Food Solutions Timeline



Year 1 – Engagement with partners

Year 2 – Feeding Kansas Report & Strategy

Year 3 – Organizing and Mobilizing

Local Food & Farm Task Force



LOCAL FOOD AND FARM TASK FORCE LEGISLATIVE REPORT

CHAIRPERSON: Ron Brown (Ft. Scott)

OTHER MEMBERS: Senator Dan Kerschen (Garden Plain), Representative Adam Lusker (Frontenac), David Coltrain (Garden City), Cary L. Rivard (Olathe), Loren Swenson (Concordia), Annarose White (Wellington), and ex officio member Senator Tom Hawk (Manhattan).

STATUTORY DIRECTIVE: The Local Food and Farm Task Force shall prepare a Local Food and Farm Plan containing policy and funding recommendations for expanding and supporting local food systems and for assessing and overcoming obstacles necessary to increase locally grown food production.

DECEMBER 2015

- Established by legislation in 2014
- 8 member, Governor appointed
- Tasked with preparing a plan outlining recommendations for supporting local food systems in Kansas.

So where are we at now?

Feeding Kansas Recommendations

Local Level Food & Farm Council Support

- Kansas Alliance for Wellness
- State Food & Farm Task Force
- Community Health Coalitions

Feeding Kansas Recommendations

**State farm & food
systems organizer**

- Local Food & Farm Task Force
- KRC engagement with partners

Feeding Kansas Recommendations

**Supports to
increase
production of fruits
and vegetables in
Kansas**

- Grim K-State KSRE cuts
- Local Food & Farm Task Force
- Farm Bureau

Where do we go from here?

- Continue to support Local Food & Farm Task Force
- Engage & amplify farmer & partner voices
- Regular open dialogue among key players
- Advocate for Higher ed-Specialty crop programs



Thank you!

Natalie Fullerton

Community Food Solutions, Program Director

Great Bend, Kansas

[Kansasruralcenter.org/feeding-kansas](https://kansasruralcenter.org/feeding-kansas)

nfullerton@kansasruralcenter.org

402-310-0177

